



# FpML SOLUTION ACCELERATORS

## SIMPLIFIED IMPLEMENTATION AND COMPREHENSIVE MESSAGE MANAGEMENT

Volante integration and data management tools include support of the FpML standard and its many variants with the FpML plug-in for Volante Designer. The FpML plug-in targets the immediate need to reduce manual processing and streamline the error-prone automated processes in handling OTC derivatives and other complex transactions. Volante FpML solutions are used by firms to communicate between internal applications and externally with trading venues and matching and clearing services.

### BUSINESS BENEFITS

- Supports all FpML versions
- Out-of-the-box ISDA rules
- Out-of-the-box SWIFTNet rules
- Granular control over FpML message flow
- Exception handling with minimal user interaction
- Automatic persistence of FpML messages to databases and caches
- Dashboard to monitor transactions
- Exceptional performance
- Native support for any infrastructure
  - Application servers
  - Web servers
  - Enterprise services bus
- Cloud
- Implementations in Java, C++, C#

The Volante FpML plug-in supports all asset classes and products associated with derivatives transactions. It can also be used with proprietary message models based on FpML such as internal canonical models, by extending the FpML base definition.

### FpML VALIDATION

Volante provides ground-up support for all versions of standard FpML messages, as defined by the International Swaps and Derivatives Association (ISDA). In addition to schema validations, users receive out-of-the-box implementation of all business validation rules. This includes standards compliance with:

- ISDA: semantic and business validations defined by the Validation Working Group
- SWIFT: mandatory business validations for FpML messages communicated over SWIFTNet

Volante also provides extended protocol-level support for FpML communications with DTCC Deriv/SERV and MarkitSERV services such as DSMatch and MarkitWire.

### HOW IS VOLANTE FpML DIFFERENT?

Volante FpML works in conjunction with other components of the Volante product suite, using Volante's proven model-based approach to offer advanced capabilities in complex data management. In addition to receiving and sending FpML messages and validating for various business uses, Volante FpML allows the user to model entire business processes directly using Volante Designer. This includes:

- Business edits
- Reference data lookups and validations
- Transformation between other standard or proprietary message formats
- Persistence to databases
- Automatic exception-handling without manual intervention
- Entry, view and repair of messages via a browser
- Transaction status monitoring
- Auditing and reporting

## VOLANTE FpML SOLUTION ACCELERATORS

Volante provides built-in FpML message library support for all versions of FpML from 4.x to present 5.x; not only REC versions but also interim development versions such as WD, LCWD and TR.

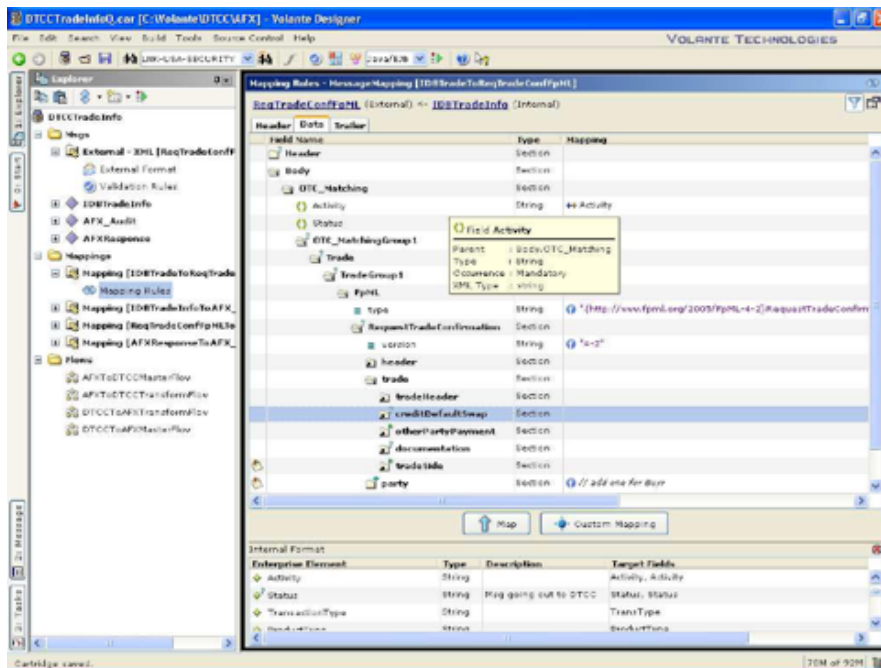
Volante models are converted into runtime libraries using Volante's sophisticated code generators that generate native code for virtually any environment – middleware, network or applications. In particular, these libraries can be deployed right away on an organization's existing infrastructure. This approach not only reduces development time, but also minimizes the need for new infrastructure and its associated overheads.

The Volante approach of compiling models into native platform code, rather than being interpreted at runtime, results in performance that is several times faster than rule-based interpretive models.

Volante also provides product upgrades as and when newer versions of the FpML standard and its variants, are released. Volante's solutions are easy to maintain, highly reusable and self-documenting, enabling lower maintenance costs and providing better overall business agility. They are employed by buy-side and sell-side organizations around the globe, as well as industry utilities, central counterparties and exchanges

## UNIQUE FEATURES

- Supports all FpML versions
- Out-of-the-box ISDA validation rules
- Out-of-the-box SWIFTNet rules
- Granular control over FpML message flow
- Exception handling with minimal user interaction
- Automatic persistence of FpML messages to databases and caches
- Dashboard to monitor transactions
- Exceptional performance
- Native support for any infrastructure
  - Application servers
  - Web servers
  - Enterprise services bus
  - Implementations in Java, C++, C#



**TARGET APPLICATIONS**

- Trading
- Affirmation
- Clearing
- Reporting
- Dodd Frank
- MIFID II

**QUOTES**

“Automation with Volante compressed the project into 8 weeks – we expected it to take 6 months.”

“Implementation time reduced by 66%”

“We reduced time to onboard corporates from 8 to 3 months... revenue improved by 600%”

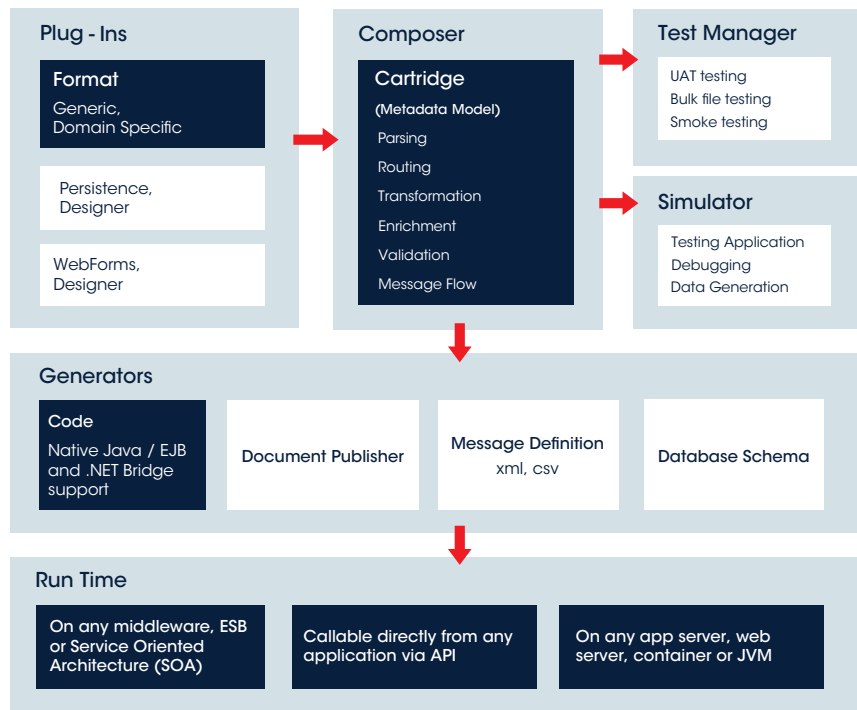
“Development time cut by 50% - maintenance by 70%”

**VOLANTE DESIGNER**

Volante Designer is a suite of modular tools designed for the integration and management of financial data. Used today by major financial institutions, exchanges and industry utilities around the world, Volante enables users to rapidly build data integration solutions that handle incoming trade data or financial messages, as well as internal data flow.

Providing message libraries and related validation rules, Format Plug-ins deliver out-of-the-box support for standard formats including SWIFT, FIX, FpML, EDI, Reuters, etc., as well as more generic formats such as XML, Fixed Width, CSV and Cobol Copybook. The result is not only expedited integration projects, but also provides the ability to rapidly integrate to any platform or application, even home-grown systems.

**MESSAGE INTEGRATION PLUS DATA MANAGEMENT**



For a demonstration of how Volante can accelerate your FpML solutions, please contact us at [info@volantetech.com](mailto:info@volantetech.com) or contact one of our regional offices below.